



LaFayette High School

Proposed Capital Project Work

ASHLEY MCGRAW

PROJECT SCOPE

The scope of the proposed capital project can be broken into three main areas: **Required Maintenance, Safety and Security Upgrades, and Space Renovations** to improve and maximize building space.

Required maintenance will include items such as roof replacement, refurbishing of windows, elevator renovation, masonry repairs, replacement of electrical panels, replacement of clock systems, heating and ventilation upgrades including new boilers, replacement of domestic water supply piping and storage tanks, and replacement of deteriorated asphalt paving and concrete sidewalks. Many of the restrooms also need to be renovated (see plan).

Safety and security upgrades will include such items as the reconfiguration of the main office, to include a secured vestibule reception window at the main entrance vestibule, establishing a single point of entry for daytime visitors. The bus loop will be widened for improved short-term visitor parking and winter maintenance. Exterior lighting upgrades include LED wall fixtures and relocation of the light pole out of the south parking lot.

Space Renovations. As distance learning and multimedia presentations have become commonplace in the classroom, the large group instruction hall will be reconfigured for a permanent choral music room, as well as relocation of the band room. This will include relocated offices, individualized instruction and practice rooms, and instrument storage, while maintaining direct access to the stage.

Several classrooms will be reconfigured into a new hub for Project Lead the Way. Formerly in the technology "wing" wing, PLTW provides programs such as "Pathway to Engineering" and "Biomedical Science", and the relocation will allow for better integration with the core math and science curricula.

These strategies will also allow the creation of a permanent home for the Big Picture School without a major addition to the building. The BPS will include new classrooms, small breakout rooms, a centralized collaboration and presentation space, a project room, and offices. A small addition will contain the principal's office, reception area and provide the school with its own secure entry point adjacent to the south parking. Site improvements required to support the curriculum will include a relocation of a small storage building and greenhouse, and construction of small pavilion style project areas.

Other exterior improvements will include a new basketball half-court for community use, and an outdoor dining terrace at the cafeteria.

LEGEND

1 PROJECT LEAD THE WAY RECONFIGURATION:

Three classrooms will be reconfigured to accommodate a new "Project Lead the Way" lab, including a computer graphics classroom and project shop.

2 CLASSROOM RENOVATION:

Minor classroom renovations to improve program efficiencies, such as placing the computer lab adjacent to the server room and IT office.

3 FACULTY TOILETS:

Area to be reconfigured to accommodate two ADA accessible faculty toilets, a large janitor closet and storage area for maintenance equipment.

4 RESTROOM RENOVATIONS:

High-rise restrooms are to be fully renovated including plumbing fixture & piping replacement, new wall & floor finishes and reconfiguration as needed for accessibility.

5 ELEVATOR REPLACEMENT

Due to its age the elevator requires renovations to bring it up to current ADA and safety codes.

6 ENTRANCE VESTIBULE RECONFIGURATION:

After all students have arrived, the main entrance doors will be locked, and all daytime visitors will be buzzed into the vestibule where office staff will check their ID before allowing them access to the building. Upgrades include a new electronic ID system and security cameras. Lobby improvements will include a new window for visual supervision, new permanent seating, and display cases.

7 MAIN OFFICE RECONFIGURATION:

The security upgrades require reconfiguration of the main office. Other improvements will include a new functional and meeting waiting area, enlarged workstation and larger flexible conference room.

8 CONFERENCE ROOM:

Current work room adjacent to the main office will be reconfigured for use as a conference room with updated finishes and casework. It can also be used as an instructional space as needed.

9 DARK ROOM REMOVAL:

Existing dark room is no longer used and will be eliminated to provide more space in the art room and direct access from main corridor.

10 ATHLETIC OFFICE RELOCATION:

Existing small office area to be reconfigured into a new athletic director's office closer to the physical education department.

11 CAFETERIA WINDOWS:

Installation of new windows at cafeteria for increased visual supervision of adjacent exit.

12 CAFETERIA TERRACE:

An outdoor dining terrace is to be built adjacent to the cafeteria. It elevated from the ground and surrounded with a brick wall and planters.

13 BUS LOOP RENOVATION:

The bus loop will be widened, with an additional 5 feet added to the parking lane to decrease congestion and avoid bottlenecks during peak times. This work includes drainage improvements and new concrete curb gutters.

14 BIG PICTURE SCHOOL:

Creating a permanent home for the Big Picture School without a major addition to the building. Contained almost entirely in renovated spaces within the existing building the BPS will include new classrooms, small breakout rooms, a centralized collaboration and presentation space, a project room, and offices.

15 BIG PICTURE SCHOOL OFFICE:

A small addition will contain the principal's office, reception area and provide the school with its own secure entry point adjacent to the south parking.

16 BIG PICTURE OUTDOOR ACTIVITY AREA:

Site improvements required to support the curriculum will include a relocation of a small storage building, the construction of small pavilion style project area and a greenhouse.

17 HALF BASKETBALL COURT:

An additional half basketball court will be located adjacent to the south parking lot, for the use of students and the community during off-hours.

18 AUDITORIUM UPDATES:

Technology updates in the auditorium will include new projection screens and HD projectors, and lighting and sound system upgrades. Work will include the addition of a permanent lift for direct access to the stage from the seating area per state mandate.

19 MUSIC SUITE RECONFIGURATION:

The large group instruction room will be reconfigured for a permanent choral music room, as well as relocation of the band room. This will include relocated offices, individualized instruction and practice rooms, and instrument storage, while maintaining direct access to the stage.



Project Scope

The scope of the proposed capital project can be broken into three main areas; **Required Maintenance**, **Safety and Security Upgrades**, and **Space Renovations** to improve and maximize building space.

Required maintenance will include items such as roof replacement, refurbishing of windows, elevator renovation, masonry repairs, replacement of electrical panels, replacement of clock system, heating and ventilation upgrades including new boilers, replacement of domestic water supply piping and storage tanks, and replacement of deteriorated asphalt paving and concrete sidewalks. Many of the restrooms need also be renovated (see plan).

Safety and security upgrades will include such items as the reconfiguration of the main office; to include a secured vestibule reception window at the main entrance vestibule, establishing a single point of entry for daytime visitors. The bus loop will be widened for improved short term visitor parking and winter maintenance. Exterior lighting upgrades; such as LED wall fixtures and relocation of the light pole out of the south parking lot.

Space Renovations, As distance learning and multimedia presentations have become commonplace in the classroom, the large group instruction hall will be reconfigured for a permanent choral music room, as well as relocation of the band room. This will include, relocated offices, individualized instruction and practice rooms, and instrument storage, while maintaining direct access to the stage.

Project Scope

Space Renovations (cont'd)

Several classrooms will be reconfigured into a new lab for Project Lead the Way. Formerly in the technology "shop" wing, PLTW provides programs such as "Pathway to Engineering" and "Biomedical Sciences", and the relocation will allow for better integration with the core math and science curricula.

These strategies will also allow the creation of a permanent home for the Big Picture School without a major addition to the building. The BPS will include new classrooms, small breakout rooms, a centralized collaboration and presentation space, a project room, and offices. A small addition will contain the principals office, receptionist area and provide the school with its own secure entry point adjacent to the south parking. Site improvements required to support the curriculum will include a relocation of a small storage building and greenhouse, and construction of small pavilion style project area.

Other exterior improvements will include a new basketball half-court for community use, and an outdoor dining terrace at the cafeteria.

1 PROJECT LEAD THE WAY RECONFIGURATION:

Three Classrooms will be reconfigured to accommodate a new "Project Lead the Way" lab, including a computer graphics classroom room and project shop.

2 CLASSROOM RECONFIGURATION:

Minor classroom relocations to improve program efficiencies, such as placing the compute lab adjacent to the server room and IT office

3 FACULTY TOILETS:

Area to be reconfigured to accommodate two ADA accessible faculty toilets, a large janitor closet and storage area for maintenance equipment.

4 RESTROOM RENOVATIONS:

Highlighted Restrooms are to be fully renovated, including plumbing fixture & piping replacement, new wall & floor finishes and reconfiguration as needed for accessibility.

5 ELEVATOR REPLACEMENT:

Due to its age the elevator requires renovations to bring it up to current ADA and safety codes.



6 ENTRANCE VESTIBULE RECONFIGURATION:

After all students have arrived, the main entrance doors will be locked, and all daytime visitors will be buzzed into the vestibule where office staff will check their ID before allowing them access to the building. Upgrades include a new electronic ID system and security cameras. Lobby improvements will include a new window for visual supervision, new permanent seating, and display cases.

7 MAIN OFFICE RECONFIGURATION:

The security upgrades require reconfiguration of the main office. Other improvements will include a more functional and inviting waiting area, enlarged workroom and larger flexible conference room

8 CONFERENCE ROOM:

Current work room adjacent to the main office will be reconfigured for use as a conference room with updated finishes and casework, and so it can also be used as an instructional space as needed

9 DARK ROOM REMOVAL:

Existing dark room is no longer used and will be demolished to provide more space in the art room and direct access from main corridor.

10 ATHLETIC OFFICE RELOCATION:

Existing small offices are to be reconfigured into a new athletic director's office closer to the physical education department



11 CAFETERIA WINDOWS:

Installation of new windows at cafeteria for increased visual supervision of adjacent exit

12 CAFETERIA TERRACE:

An outdoor dining terrace is to be built adjacent to the cafeteria. It elevated from the ground and surrounded with a short wall and planters.

13 BUS LOOP RENOVATION:

The bus loop will be repaved, with an additional 5 feet added to the parking lane to decrease congestion and avoid bottlenecks during peak times. This work includes drainage improvements and new concrete curb gutters

14 BIG PICTURE SCHOOL:

Creating a permanent home for the Big Picture School without a major addition to the building. Contained almost entirely in reclaimed spaces within the existing building the BPS will include new classrooms, small breakout rooms, a centralized collaboration and presentation space, a project room, and offices.

15 BIG PICTURE SCHOOL OFFICE:

A small addition will contain the principals office, receptionist area and provide the school with its own secure entry point adjacent to the south parking



13

16 OUTDOOR ACTIVITY AREA:

Site improvements required to support the curriculum will include a relocation of a small storage building and greenhouse, and construction of small pavilion style project area.

17 HALF BASKETBALL COURT:

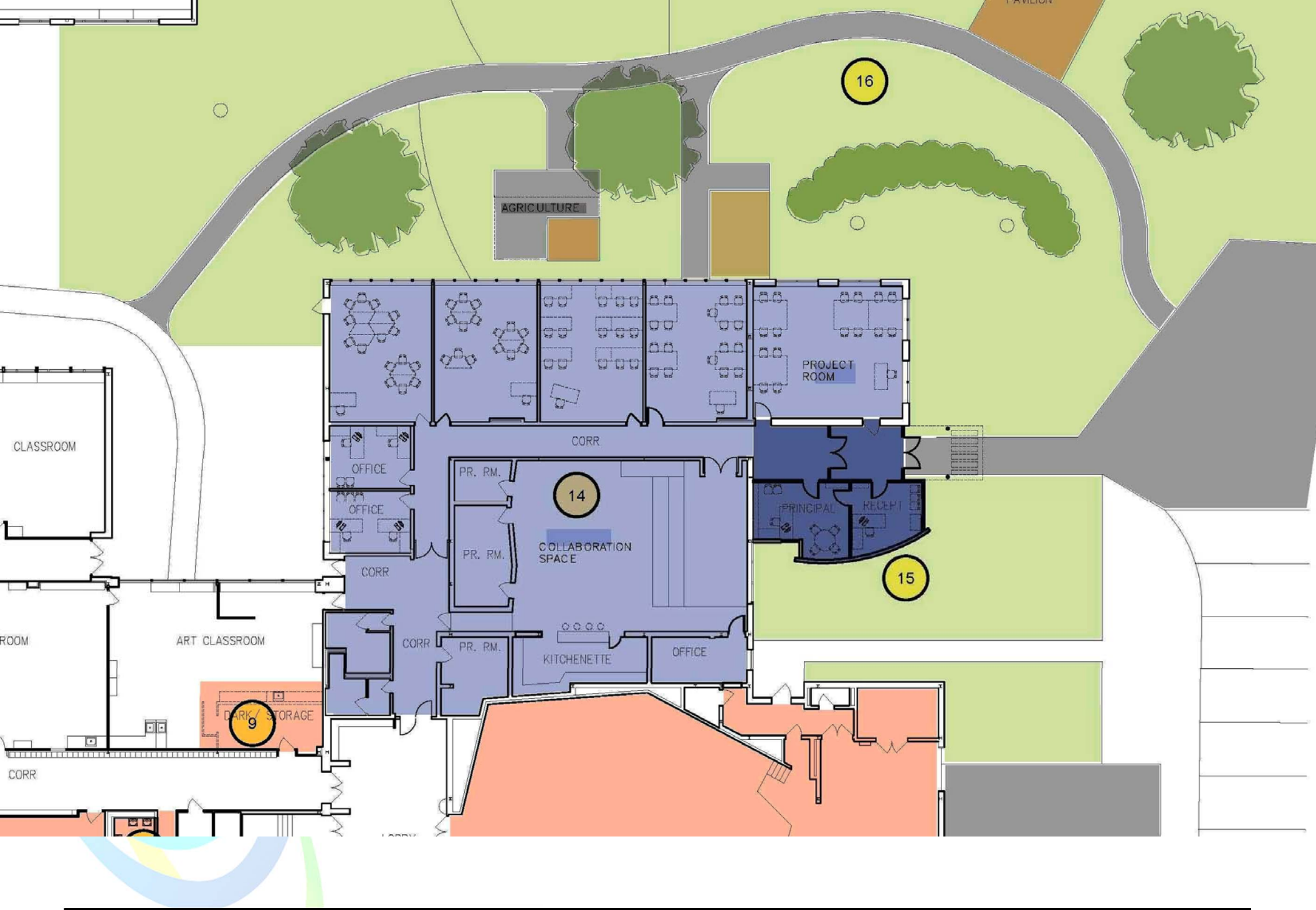
An additional half basketball court will be built created adjacent to the south parking lot, for the use of students and the community during off-hours.

18 AUDITORIUM UPDATES:

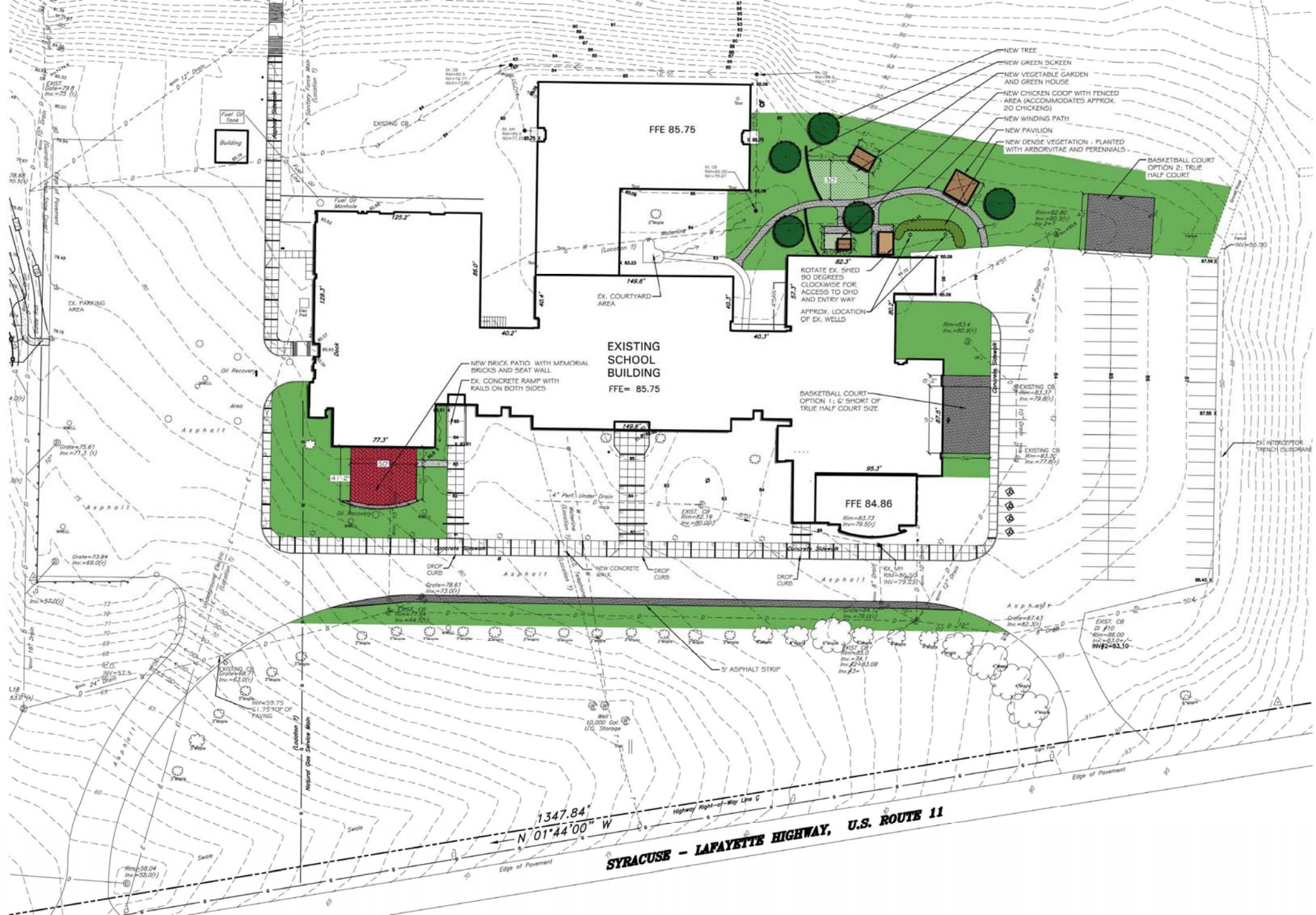
Technology updates in the auditorium will include new projection screens and HD projectors, and lighting and sound system upgrades. Work will include the addition of a permanent lift for direct access to the stage from the seating area per state mandate.

19 MUSIC SUITE RECONFIGURATION:

The large group instruction will be reconfigured for a permanent choral music room, as well as relocation of the band room. This will include, relocated offices, Individualized instruction and practice rooms, and instrument storage, while maintaining direct access to the stage.







5-Sep-13 Board of Education Resolution

6-Sep-13 - 18-Oct-13 45 Day waiting Period

Sept. 25th Public Meeting @ Grimshaw

Oct. 15th Public Meeting @ High School

22-Oct-13 *Public Referendum*

23-Oct-13 - 23-Dec-13 Schematic Design

24-Dec-13 - 14-Feb-14 Design Development

14-Feb-14 *Reconcile Budget & Scope*

15-Feb-14 - 30-Apr-14 Construction Documents

1-May-14 SED Submission

2-May-14 - 2-Oct-14 SED Review Approval (5 months)

3-Oct-14 Reconcile Budget & Scope

4-Oct-14 - 5-Dec-14 Bid and Award

6-Dec-14 - 15-Feb-16 Construction