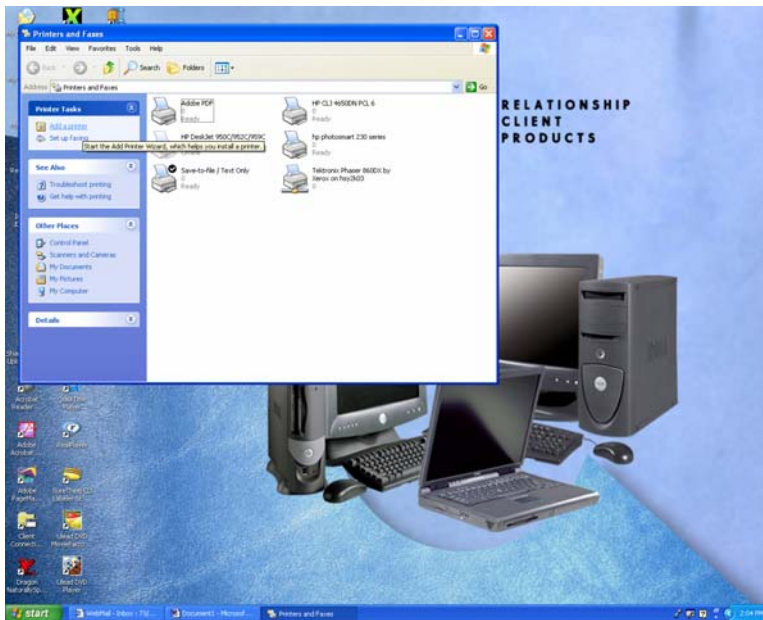
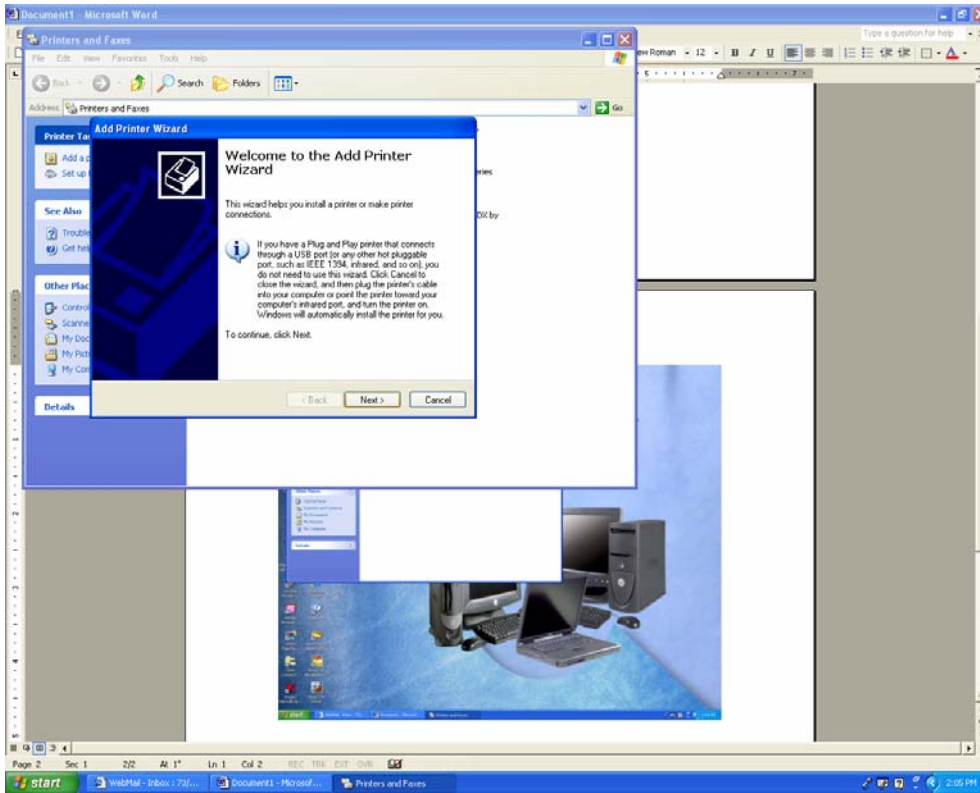




To Add A Printer:

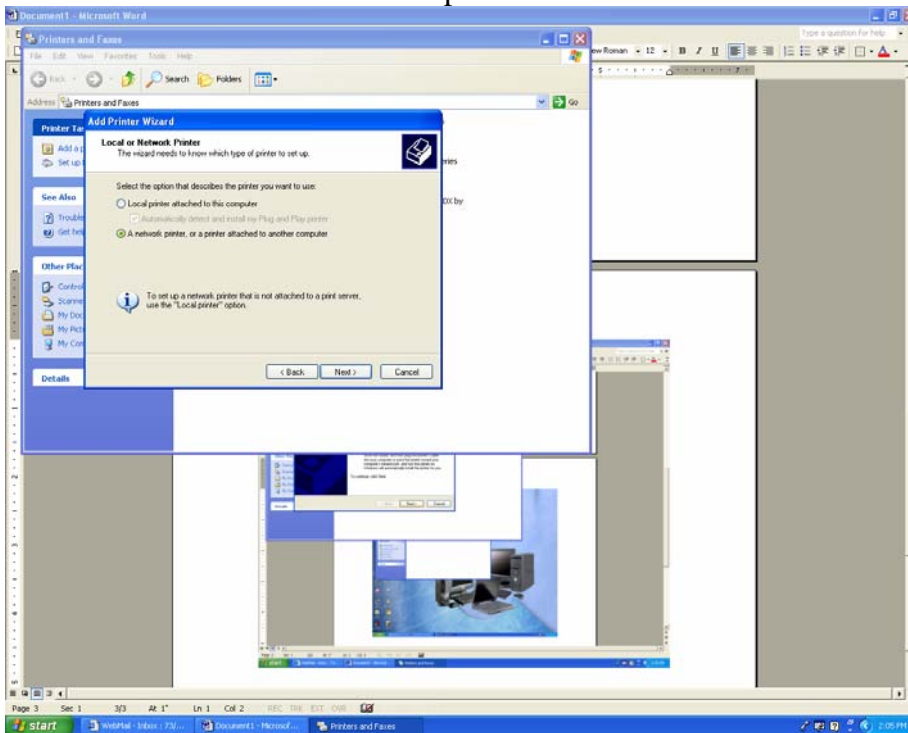
1. Go to the START MENU, Choose SETTINGS, PRINTERS AND FAXES
2. Click on Printers and Faxes. And Choose Add A Printer





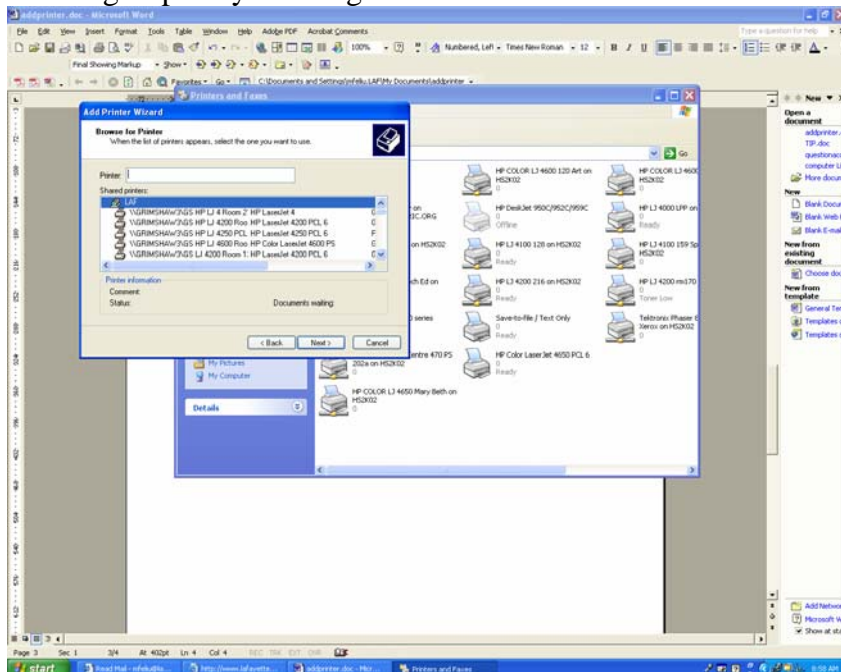
3. The Welcome to Add A Printer Wizard will appear. Click NEXT

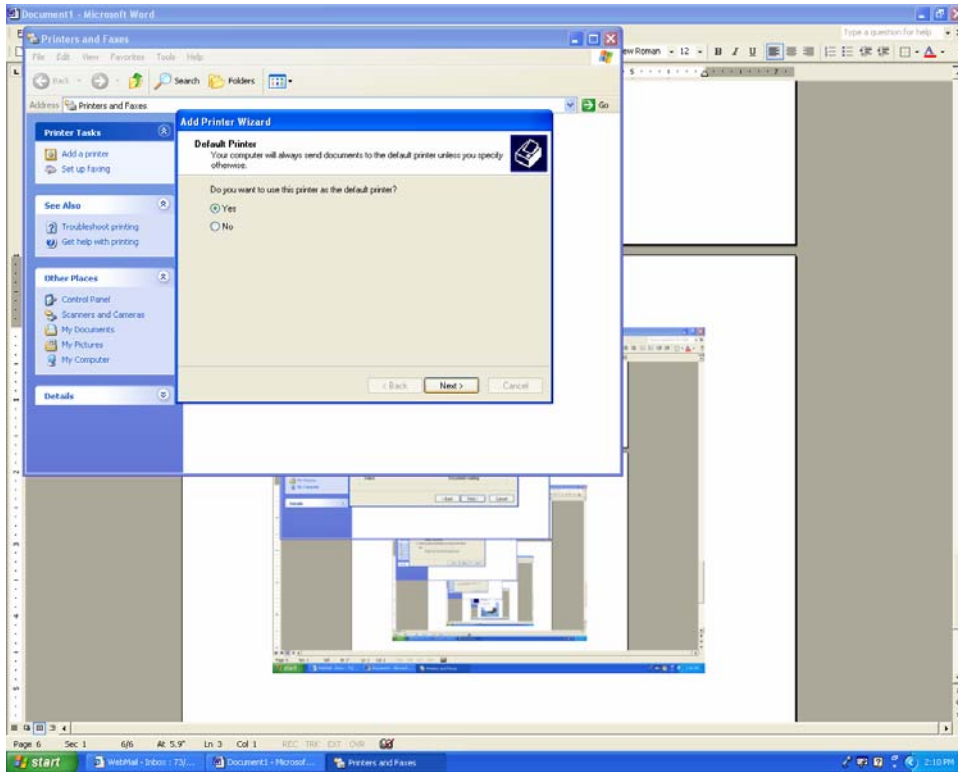
4. Choose Network Printer Option and Click Next





5. When the Specify A Printer Box Appears, Choose Connect To This Printer and click next
6. Scroll Down the List of Printers and Click on the one you want to choose. They are grouped by building.





7. Choose Default printer if this is the Printer you will use most often
8. Click Finish
9. Repeat for any Printer you wish to add

