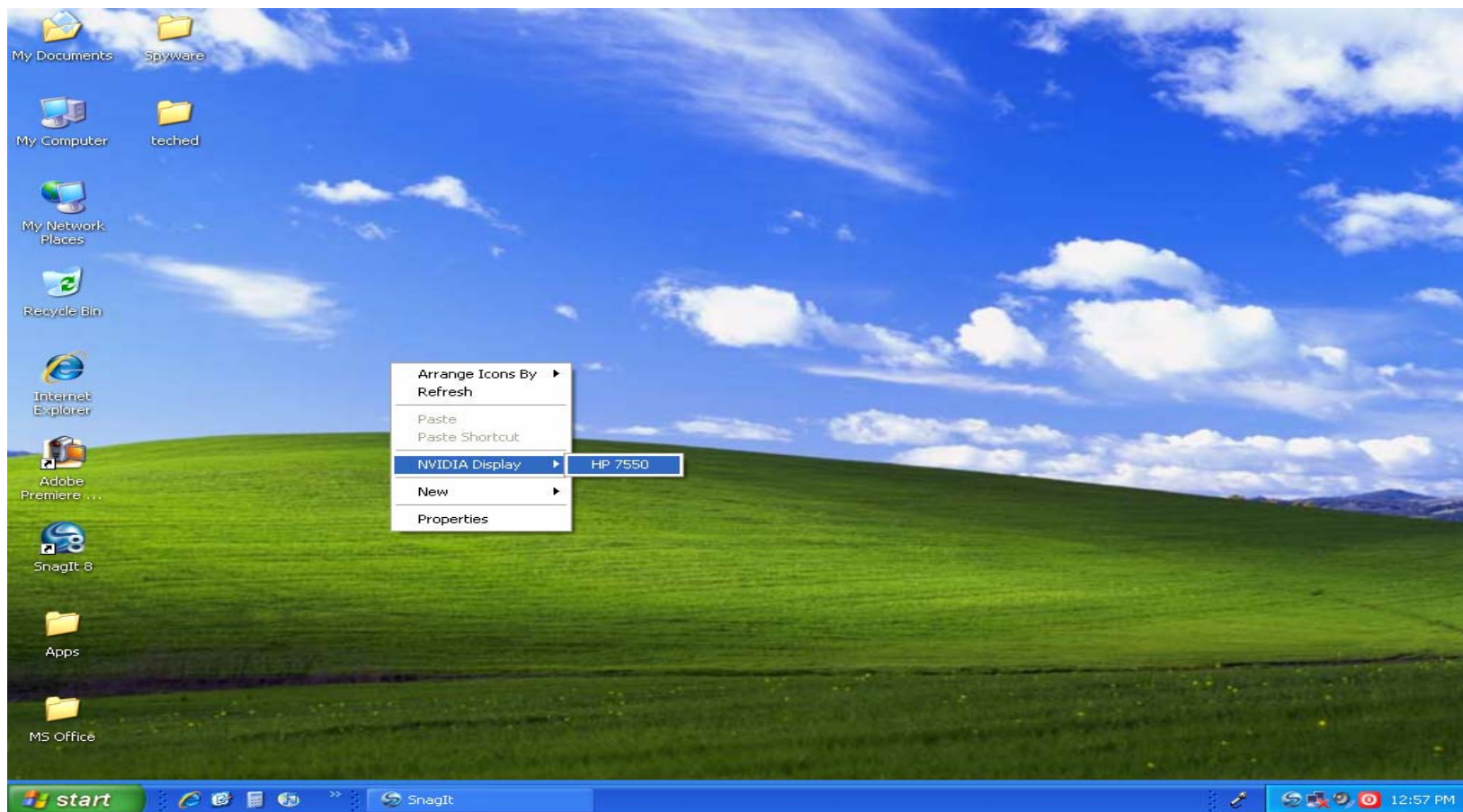


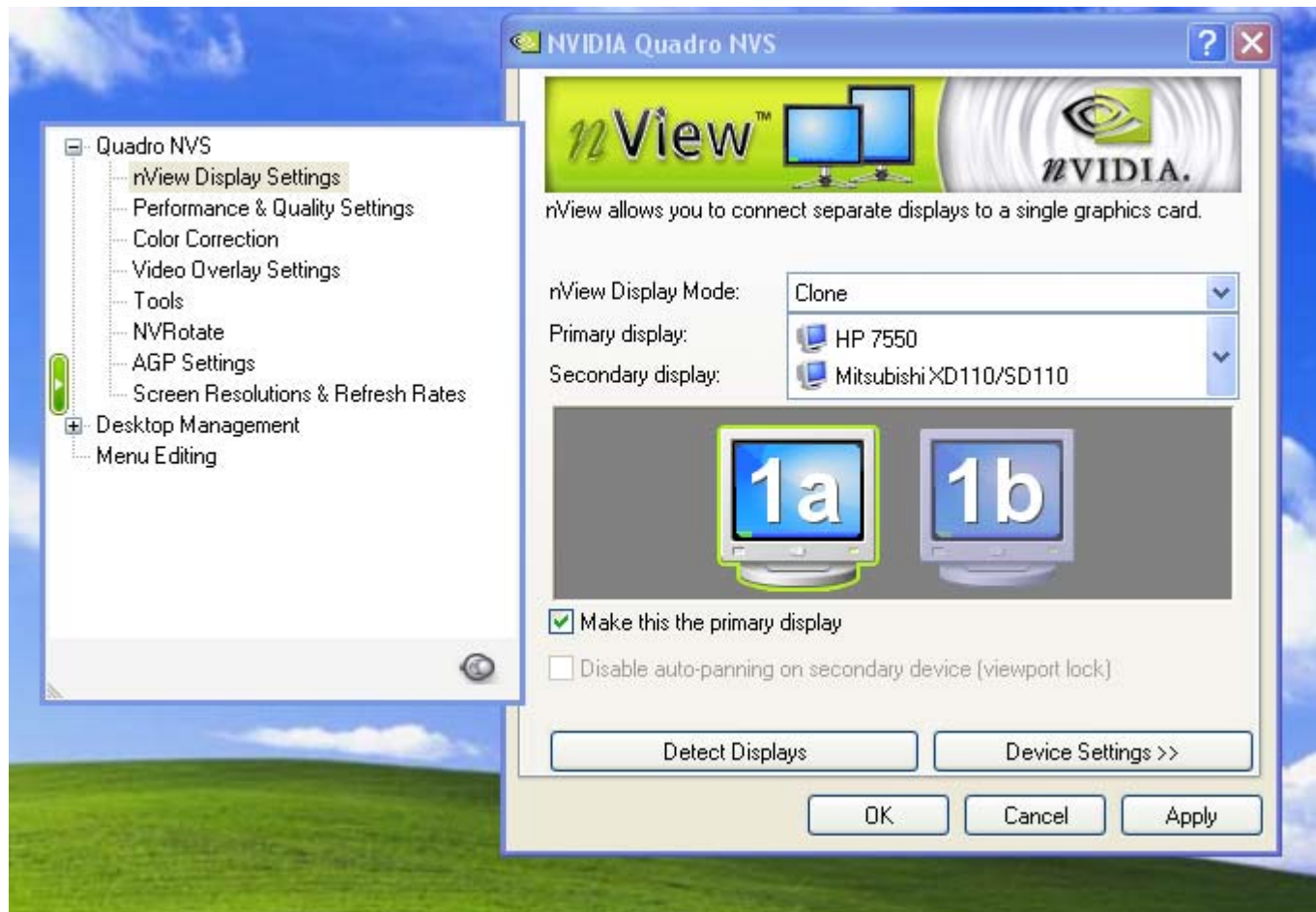
Setting Up A Video Projector

As A Second Display
On A Desktop Computer
HP

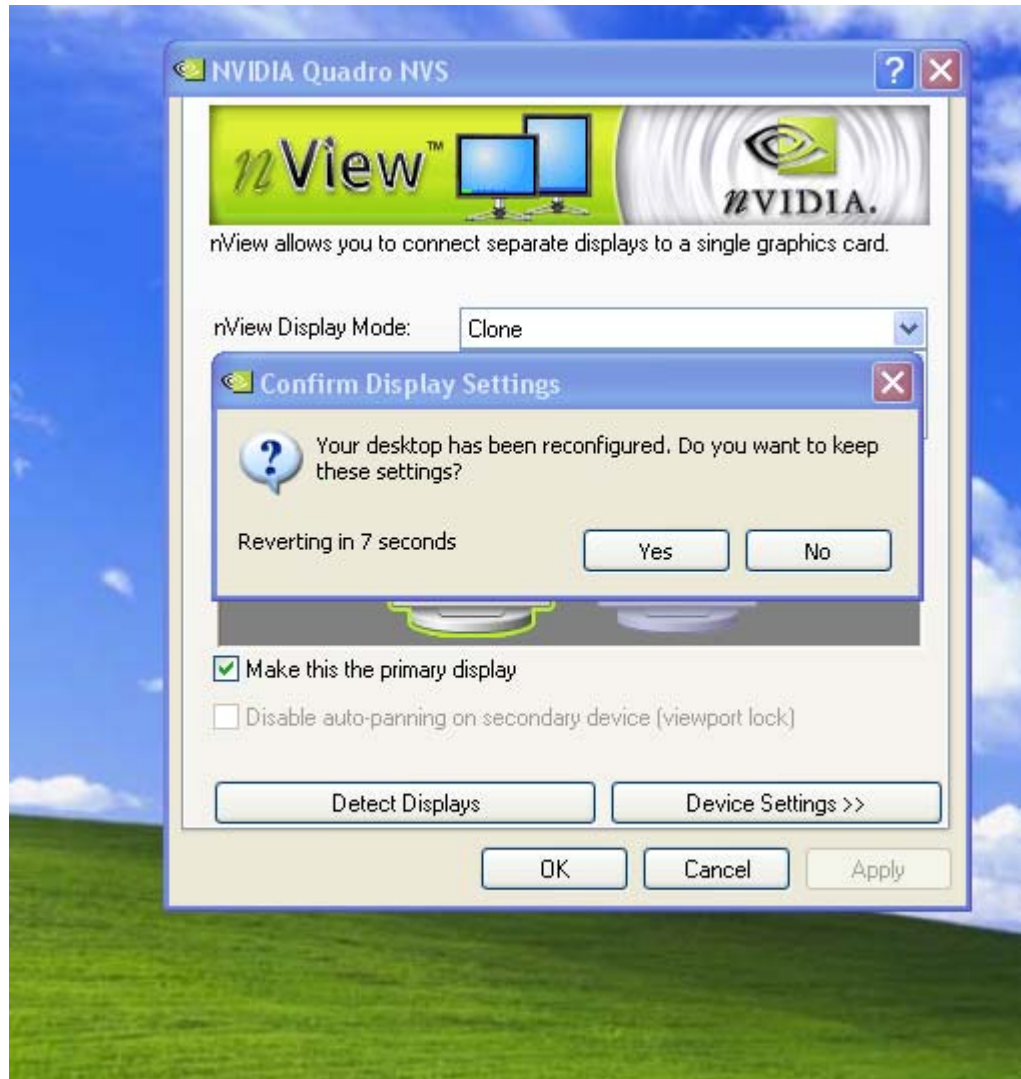
1. Make sure the projector is connected and turned on and right click anywhere on the desktop. Choose the NVIDIA Display and hp monitor. Click.



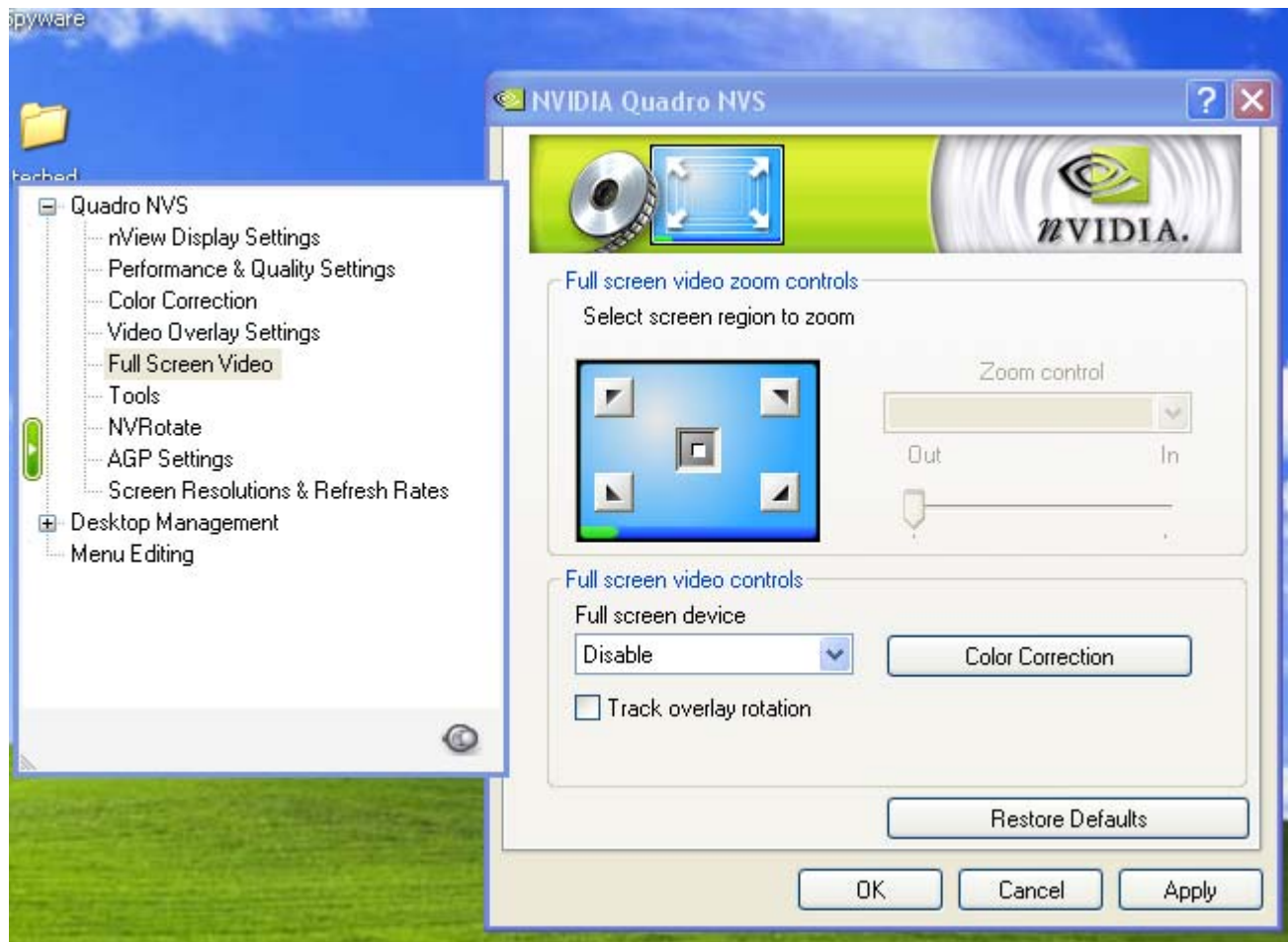
2. Choose nView Display settings and from the nView Display mode drop down box choose clone, with the primary display as your HP monitor and the secondary display as your video projector. Click Apply.



3. Confirm your selection by clicking Yes. The screen may flicker or go black for a few seconds. Click OK.



4. Showing videos may require you to also set video options. Choose Full Screen Video from the list as shown. Click Apply.



5. From the drop down boxes choose the secondary display as your full screen device and Both from the Zoom Control drop box. Click OK. Remember to reset these options when you are finished with your video.

