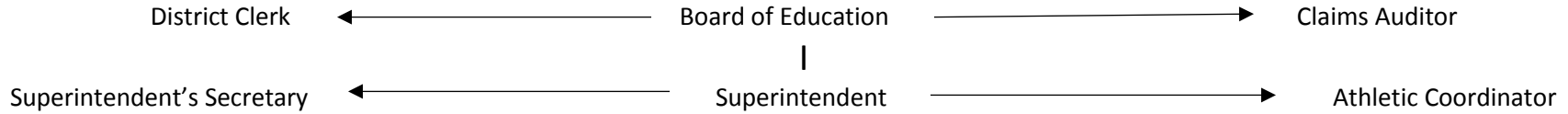


LaFayette Central School Organizational Chart 2016-2017

Policy # 4212

Approved: July 14, 2016



Jr./Sr. High School Principal	Big Picture Principal	Grimshaw Elementary Principal	Onondaga Nation Principal	Director of CSE	Assistant Superintendent for Business
Teachers	Teachers	Teachers	Teachers	Psychologists	Treasurer
Teacher Assistants	Teacher Assistants	Teacher Assistants	Teacher Assistants	Psychologist Intern	Account Payable
Nurse	Clerical	Network Admin	Nurse	Spec. Ed. Teachers	Payroll Clerk
Clerical	Counselors	Computer Techs	Clerical	Teacher Assistants	School Tax Collector
Counselors	Substitutes	Nurse	Counselors	Clerical	
NA Liaison		Clerical	Home School Liaison		
Café Aides		Counselors	Café Aides		
Substitutes		Café Aides	Substitutes		
		Related School Personnel			
		Substitutes			

Transportation Supervisor	School Lunch Manager	Director of Facilities
Head Mechanic/Driver	Cook/Manager	Maintenance Workers
Mechanic/Driver	Cook	Custodians
Drivers	Food Service Helper I	Custodial Worker I & II
Aides	Food Service Helper II	Grounds person
Substitutes	Food Service Director	Summer Help
Messenger	Substitutes	Substitutes