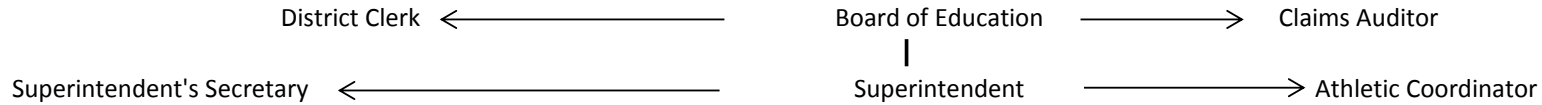


LaFayette Central School Organizational Chart - 2017-2018

Policy 4212

Approved: 7/6/2017



Jr./Sr. High School Principal	Big Picture Principal	Grimshaw Elementary Principal	Onondaga Nation Principal	Director of CSE	Assistant Superintendent for Business
Teachers	Teachers	Teachers	Teachers	Psychologists	Treasurer
Teaching Assistants	Teaching Assistants	Teaching Assistants	Teaching Assistants	Psychologist Intern	Accounts Payable
Nurse	Clerical	Network Admin	Nurse	Spec. Ed. Teachers	Payroll Clerk
Clerical	Counselors	Computer Techs	Counselors	Teaching Assistants	School Tax Collector
Counselors	Substitutes	Nurse	Clerical	Clerical	
NA Liaison		Clerical	Home-School Liaison		
Café Aides		Counselors	Café Aides		
Substitutes		Café Aides	Substitutes		
		Related School Personnel			
		Substitutes			

Transportation Supervisor	School Lunch Manager	Superintendent of Bldgs & Grnds
Head Mechanic/Driver	Cook/Manager	Maintenance Worker
Mechanic/Driver	Cook	Custodians
Drivers	Food Service Helper I	Custodial Worker I & II
Aides	Food Service Helper II	Groundsperson
Substitutes	Food Service Director	Summer Help
Messenger	Substitutes	Substitutes